

May 4-1885.

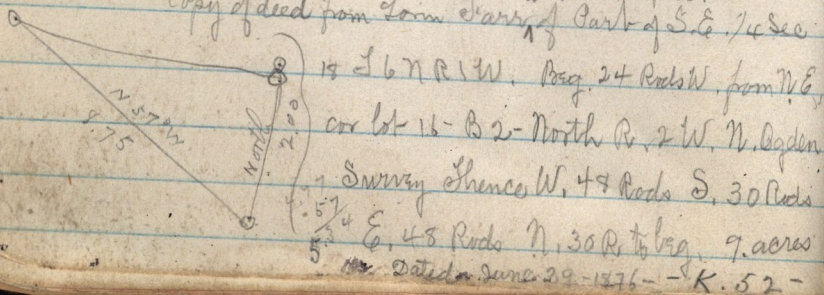
Copy of deed from Lorin Barry to
John Taylor. Trustee in trust &c
Dated April 29-1878.

Part of S.E. 1/4 Sec 18 T6NR1W
Beg. 12.80 ch W. & 7.50 ch S from
N.E. cor of said 1/4 Sec
thence S. 8.75 ch; on East side
of St. S $44\frac{1}{2}^{\circ}$ E. 5.86 ch
S $39\frac{1}{2}^{\circ}$ E. 2.99 ch; South 1.00 ch
in channel of mill cr. and to Middle
of St. East 1.53 ch in midst.

North 10.00 ch to center of water sect,
N 57° W, 8.75 ch in said sect,
to place of beg. 7 ac. reserves a
right of way 1 rod wide on South
end L-253-

see sketch on next page

Copy of deed from Lorin Barry to John Horspach,
Part of S.E. 1/4 Sec



Dated June 29-1876 - K. 52 -